

- 4th floor, Babek Plaza, Office 2,
Pr. Babek, Baku, Azerbaijan
- Telephone: (994 12) 4880597
- Mobile: (994 50) 302 09 02
- E-mail: info@royalmarine-llc.com



CAPELLA

Vessel Particulars

GENERAL INFORMATION

Flag:	Azerbaijan
Build:	1980
Type of the Vessel:	Cargo & accommodation vessel
Class notation:	KML3 R2Special vessel ship
IMO Number:	7612412
Classification Society:	RS
Sea Endurance:	10days
Sea Speed:	12,5knots

MAIN DIMENSIONS

LOA:	95 m
Beam:	13 m
Depth moulded:	5,5 m
Draft:	3,7 m

ANCHOR EQUIPMENT

Anchors:	Foreship anchors: 2 x 1,4 tons, Hall type Aftship anchor: 540 kg
Anchor Chains:	Foreship chains: 37 mm, PS – 220 m, SB – 247,5 m Aftship chain: 22 mm, 82,5 m

TONNAGE

GRT:	2349 tons
NRT:	704 tons
DWT:	1987 tons

CONSUMPTION

Fuel Type: MDO

Fue Consumption : Speed 12,5 knots – 5,6 tons/day
Speed 7 knots – 3,1 tons/day
Stand-by – 0,3 tons

ACCOMMODATION

Quantity of Cabins :	49 fully conditioned
Berths:	for 120 people

ROYAL MARINE

CAPELLA

MACHINERY

Main Engines:	2 x 640 kWt
Auxiliary Engines:	2 x 212 kWt, 1 x 64 kWt, 1 x 50 kWt
Propellers:	2, fixed pitch propellers
Bow thruster:	64 kWt, 1 tonn
Deck crane:	Hydralift capacity 3,5 tons, boom 11 m

CAPACITIES

Fuel:	140 tons
Oil:	3 tons
Potable Water:	209 tons
Sewage tanks:	22,7 m3
Sewage treatment:	1 x daily capacity 25,2 m3
Incinerator:	1 x 30 kg/hour
Osmosis unit:	1 x 23 m3/day

NAVIGATION / COMMUNICATION EQUIPMENT

Sailing area:	A1, A2, A3
Gyro compass:	Amur M
Radar:	Bridgemaster-E; FAR 2117
Depth Sounder:	Samyung SES-2000
GPS:	Furuno Gp80
AIS:	T 101 VDU
Autopilot:	Decca Pilot 550
EPIRB:	RLB-32
VHF radio station with DSC:	FM8500; Fm8800
MF/HF radio station with DSC:	FS-1562-15; DSC-6A
Portable VHF radio:	3 x STV-160
Inmarsat-C:	TT 3020; FELCOM-15
NAVTEX:	SNX-300
Radar transponder:	2 x SERPE-IESM
Satellite communication:	Dozor 4

CARGO HOLD Nr.1

Dimensions:	20,01 m X 11,25 m X 6 m
volume:	1099 m3
hatches:	16,56 m X 8,4 m
Hold deck load:	6 t/m2 /Hold hatches load 1,756 t/m2

CARGO HOLD Nr.2

Dimensions:	26,91 m X 11,25 m X 6 m
volume:	1645 m3
hatches:	22,77 m X 8,4 m
Hold deck load:	6 t/m2/ Hold hatches load/ 1,756 t/m2

ROYAL MARINE

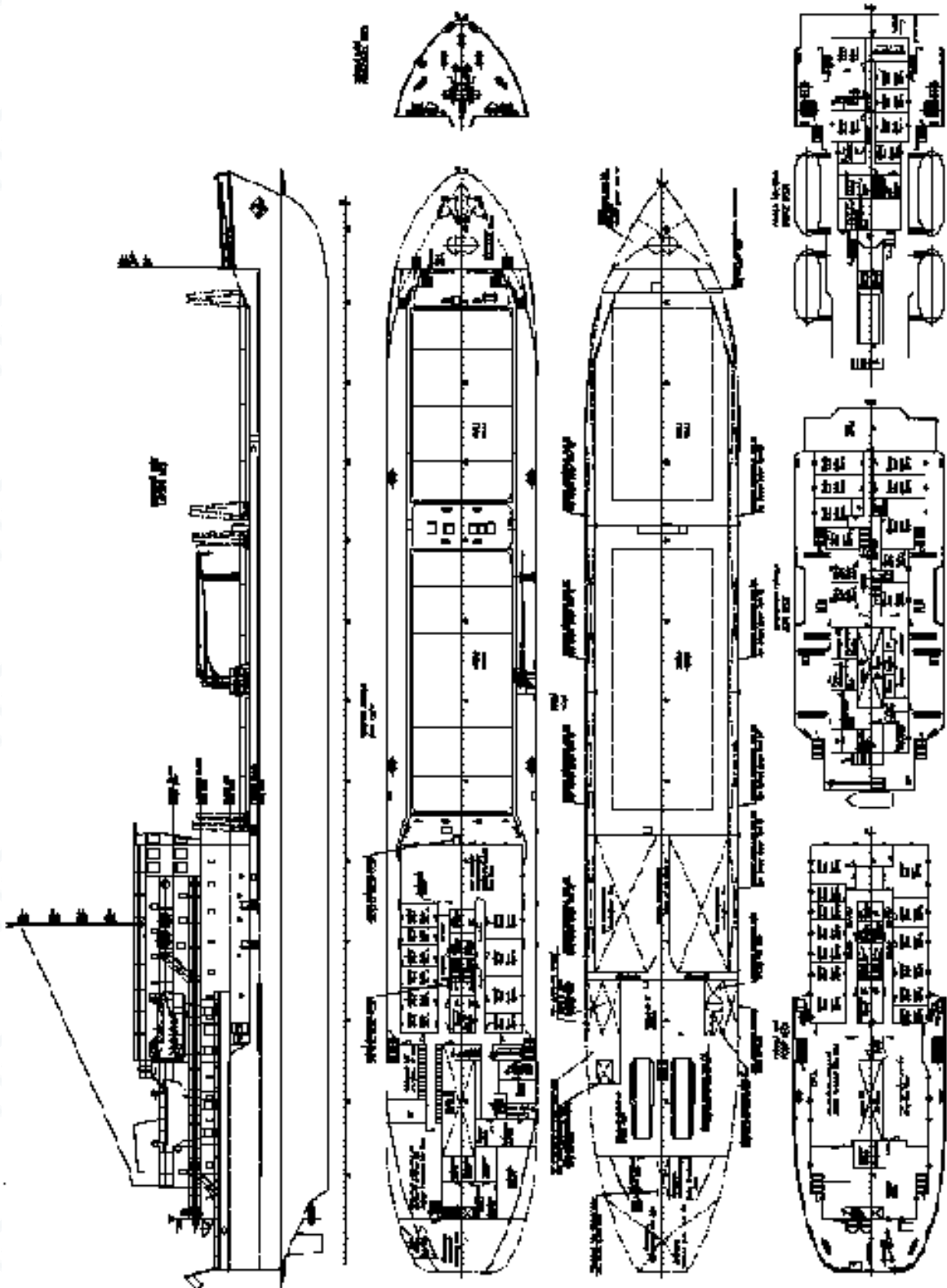
CAPELLA

Fuel consuming equipment	Fuel consumption at various load, Kg/hour									
	Work load, %									
	10	20	30	40	50	60	70	80	90	100
Main engine Nr.1, Nr2 6NVDS	14,53	28,73	42,93	57,13	71,34	87,18	101,71	116,24	130,77	145,29
Diesel generator Nr.1, 2 Detroit	3,96	7,92	11,88	15,84	19,8	23,76	27,72	31,68	35,64	39,6
Diesel generator Nr.3 Iveco-AIFO	2,17	4,5	6,83	9,16	11,5	13,54	15,58	17,62	19,66	21,7
Emergency generator K-268M	1,34	2,68	4,02	5,36	6,7	8,04	9,38	10,72	12,06	13,4
Water heating boiler Greenruus	2,5	5	7,5	10	12,5	15	17,5	20	20,25	25

Consuming equipment	Lube oil consumption at various load, Kg/hour									
	Work load, %									
	10	20	30	40	50	60	70	80	90	100
Main engine Nr.1, Nr2 6NVDS	0,150	0,300	0,450	0,600	0,750	0,900	1,050	1,200	1,350	1,500
Diesel generator Nr.1, 2 Detroit	0,016	0,032	0,048	0,064	0,080	0,096	0,112	0,128	0,144	0,160
Diesel generator Nr.3 Iveco-AIFO	0,0065	0,013	0,019	0,025	0,032	0,041	0,046	0,053	0,059	0,065
Emergency generator K-268M	0,01	0,02	0,03	0,04	0,05	0,06	0,07	0,08	0,09	0,1

ROYAL MARINE

GENERAL ARRANGEMENT PLAN



This vessel specification is given in good faith and assumed to be correct but not guaranteed.