

- 4<sup>th</sup> floor, Babek Plaza, Office 2,  
Pr. Babek, Baku, Azerbaijan
- Telephone: (994 12) 4880597
- Mobile: (994 50) 302 09 02
- E-mail: [info@royalmarine-llc.com](mailto:info@royalmarine-llc.com)



## PONTOS

### Vessel Particulars

#### GENERAL INFORMATION

Flag:	Azerbaijan
Build:	2009
Type of the Vessel:	AHTS
Class notation:	C tug, supply vessel-anchor handling, fire-fighting ship -1-water-spraying
IMO Number:	9550876
Classification Society:	RINA
Sea Endurance:	14 days
Sea Speed:	12 knots
Bollard pull:	48 tons

#### MAIN DIMENSIONS

LOA:	41,80 m
Beam:	10,00 m
Depth moulded:	4,6 m
Draft:	3,2 – max 3,6 m

#### TONNAGE

GRT:	573 t
NRT:	172 t
DWT:	329, 13 t

#### CONSUMPTION

Fuel Type:	MDO
Work Consumption:	11-13 tons per day
Stand-by Consumption:	0,65 tons per day

#### ACCOMMODATION

Quantity of Cabins :	10 fully conditioned
Berths:	for 18 persons

# ROYAL MARINE

## PONTOS

### MACHINERY

Main Engines:	2 X 1492 KW (4000 BHP)
Propellers:	2 CPP in fixed kort nozzles
Auxiliary Engines:	3 x abt 294 kW Volvo Penta
Bow thruster:	225 kW electric motor, min 3.6 tons

### CAPACITIES

Fuel:	270 m <sup>3</sup>
Oil:	7 m <sup>3</sup>
Potable Water:	90 m <sup>3</sup>
Sewage tank:	22 m <sup>3</sup>
Deck Area:	100 m <sup>2</sup>

### NAVIGATION / COMMUNICATION EQUIPMENT

Telex NBDP:	FAX-408
NAVTEX Receiver:	JMC, NT-1800
AIS:	Samyung SI-70A
EPIRB:	Mc Murdo, E5
SSAS:	Sailor 6120 SSA
VHF radio station with DSC:	Furuno FM 8800S
GPS Nr1:	Furuno GP-32
GPS Nr2:	Furuno GP-150
Radar:	Furuno MU-231CR; Furuno FR-1510-Mark-3
Marine GMDSS:	Mc Murdo R1
Autopilot:	Simrad Ap50
Depth Sounder:	Furuno FE-700
Gyro Compass and repeater:	Sperry marine, NVIGAT x Mk2, 0735-07
Main magnetic compass:	Saura Keiki Mr-150
HVF two-way communication radio station :	Furuno FS-2570C
Inmarsat-C:	2 x Furuno Felcom 15,
Portable VHF:	Entel, 3 units
Satellite communication:	Sailor 250

### DECK EQUIPMENT

Anchor Type:	2 x 675 kg HHP
Anchor Chain:	dia. 24 mm, Grade 3, total length 412,5 m
Anchor windlass:	electro hydraulic, 3 tons pull at 10 m/min
Tow Pins & Shark jaws:	SWL 200 ton
Capstan:	variable speed hydraulic capstan, pull 3 tons at 15m/min
Tagger Winch:	electro-hydraulic tugger winch 5 tons pull
Stern roller:	4 m long, diameter 1,8 m
Towing winch:	electro hydraulic towing winch 150 tons brake holding, 100 tons, pipe cage at winch
Towing cable:	800 m x 48 mm on towing drum, 500 m x 50 mm on anchor handling drum

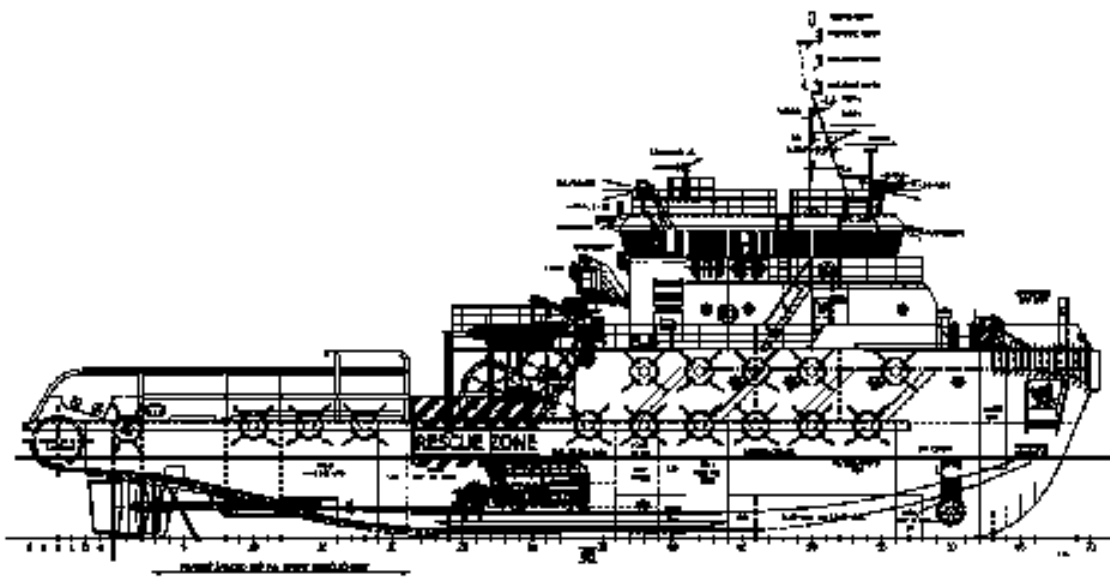
### Fi-Fi system

External Fi-Fi system 1:	2 fire pumps with diesel engines @ 1500 m <sup>3</sup> /hr each
Fi-Fi monitors:	2 remote control Foam/H2O
Oil Dispersant System:	2 dispersant spray boom 5m length with 5 nozzles @ 125 liters/min 5 kg/cm <sup>2</sup> each nozzle

# ROYAL MARINE

## PONTOS

### GENERAL ARRANGEMENT PLAN



#### GENERAL ARRANGEMENT PLAN

Overall Length: 40.00 m  
Overall Width: 10.00 m  
Overall Height: 10.00 m  
Overall Depth: 10.00 m  
Overall Weight: 10.00 t

Overall Length: 40.00 m  
Overall Width: 10.00 m  
Overall Height: 10.00 m  
Overall Depth: 10.00 m  
Overall Weight: 10.00 t

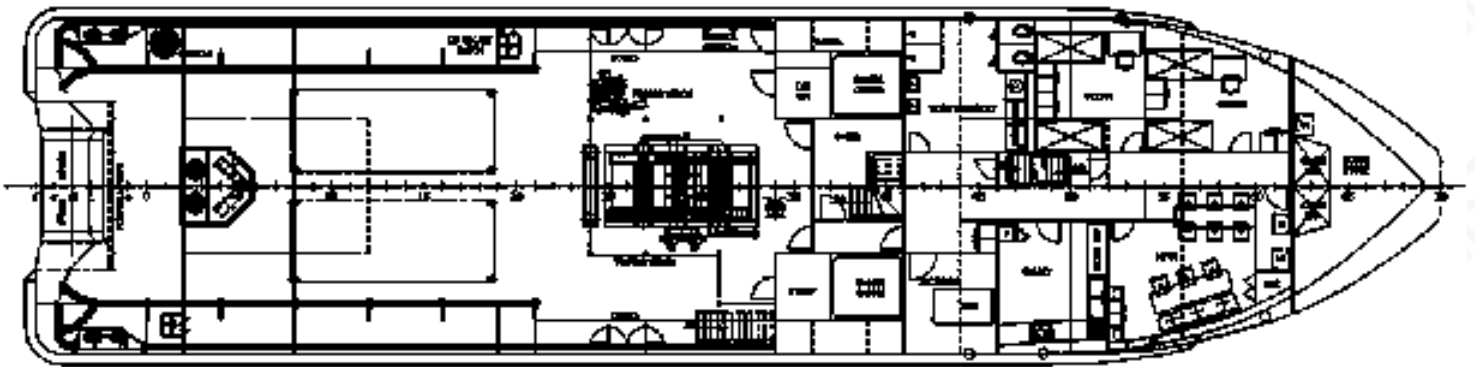
ROYAL MARINE COMPANY LIMITED  
1000, WILSON ROAD, SINGAPORE

This vessel specification is given in good faith and assumed to be correct but not guaranteed

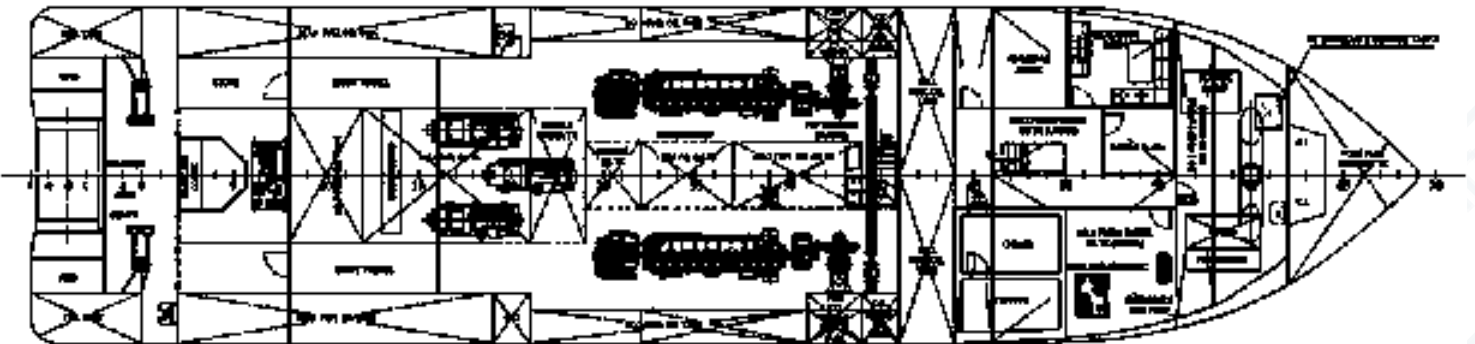
# ROYAL MARINE

## GENERAL ARRANGEMENT PLAN

MAIN DECK PLAN



PLAN BELOW MAIN DECK



This vessel specification is given in good faith and assumed to be correct but not guaranteed

