

- 4th floor, Babek Plaza, Office 2,
Pr. Babek, Baku, Azerbaijan
- Telephone: (994 12) 4880597
- Mobile: (994 50) 302 09 02
- E-mail: info@royalmarine-llc.com



TETHYS

Vessel Particulars

GENERAL INFORMATION

Flag:	Azerbaijan
Built:	December, 1982
Type of the Vessel:	Crane vessel
Class:	(KM)R2 crane vessel
IMO Number:	8210340
Classification Society:	RS
Sea Endurance:	15 days
Sea Speed:	9,4 knots

MAIN DIMENSIONS

LOA:	51,74 m
Beam:	16,00 m
Depth moulded:	3,30 m
Draft:	2,65 m

CRANE

Crane Lifting Capacity:	90 tons / 24,7 tons
Crane Outreach:	37,9 m / 40 m
Crane Hook Lift. Height:	28 m / 30 m
Crane Hook Subm. Depth:	5 m / 20 m

TONNAGE

GRT:	825 tons
NRT:	247 tons
DWT:	610 tons

CONSUMPTION

Fuel Type:	MDO
Work Consumption:	2,5 tons
Stand-by Consumption:	0,3 tons

ACCOMMODATION

Quantity of Cabins :	10, fully air conditioned
Berths:	for 16 people

ROYAL MARINE

TETHYS

MACHINERY

Main Engines:	1 x 882 kWt
Auxiliary Engines:	1 x 350 kWt, 2 x 36 kWt
Bow thruster:	250kWt, 3,6 tons
Propeller:	One fixed pitch

CAPACITIES

Fuel:	100 tons
Luboil:	1,5 tons
Potable Water:	30 tons
Ballast:	186 tons
Deck Cargo:	466 tons
Deck area, cargo:	20 x 15 m, max 13 t/m ²

NAVIGATION / COMMUNICATION EQUIPMENT

Radar:	FAR 2117
Depth Sounder:	Furuno FE-700
Inmarsat-C:	Furuno, Felcom-15
NAVTEX Receiver:	SAMYUNG SNX-300
Autopilot:	RESCO
EPIRB:	Sep-406
VHF radio station with DSC:	2, Furuno FM-8800S
Inmarsat-C:	Furuno, Felcom-15
GPS:	Furuno GP-32, Koden KGP-913
Satellite compass:	Furuno Sc50
Magnetic compass:	2 units
AIS:	SI 30R
Radar transponder:	2, RT9, S4
MF/HF radio station with DSC:	FS-2571C c DSC-6A
Portable VHF radio:	3, IC-GM1600

MOORING EQUIPMENT

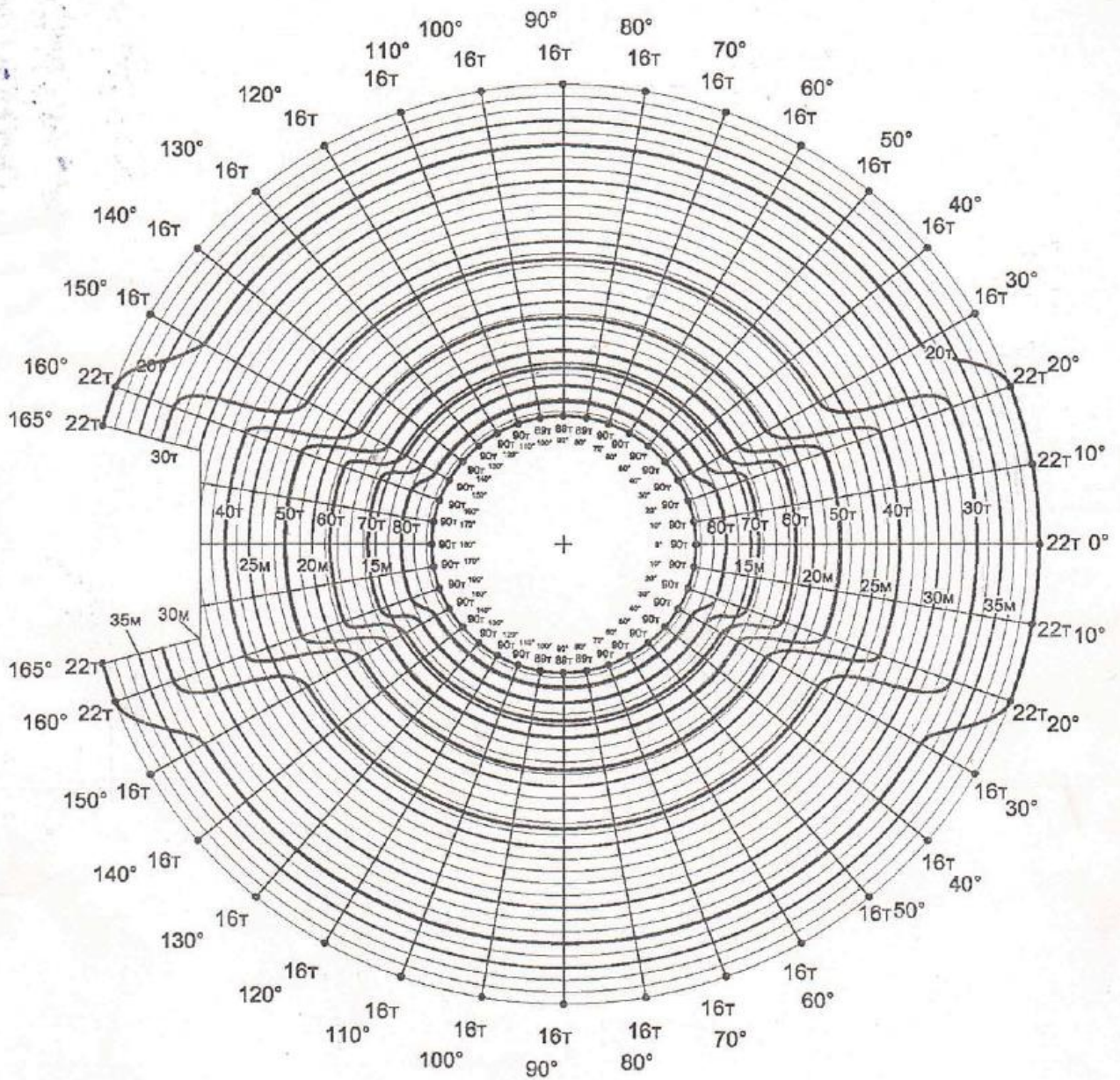
Anchor, type:	4 anchors, (2 bow and 2 stern), Hall
Anchor Weight:	2x1500 kg and 2 x 1200 kg
Winches:	4 winches, (2 bow and 2 stern)
Bow Anchors Chain Ø / L:	34 mm / 192,5 m; 34 mm / 220 m
Stern Anchors Wire Ø / L:	32 mm / 100 m, 32 mm / 100 m

ROYAL MARINE



TETHYS

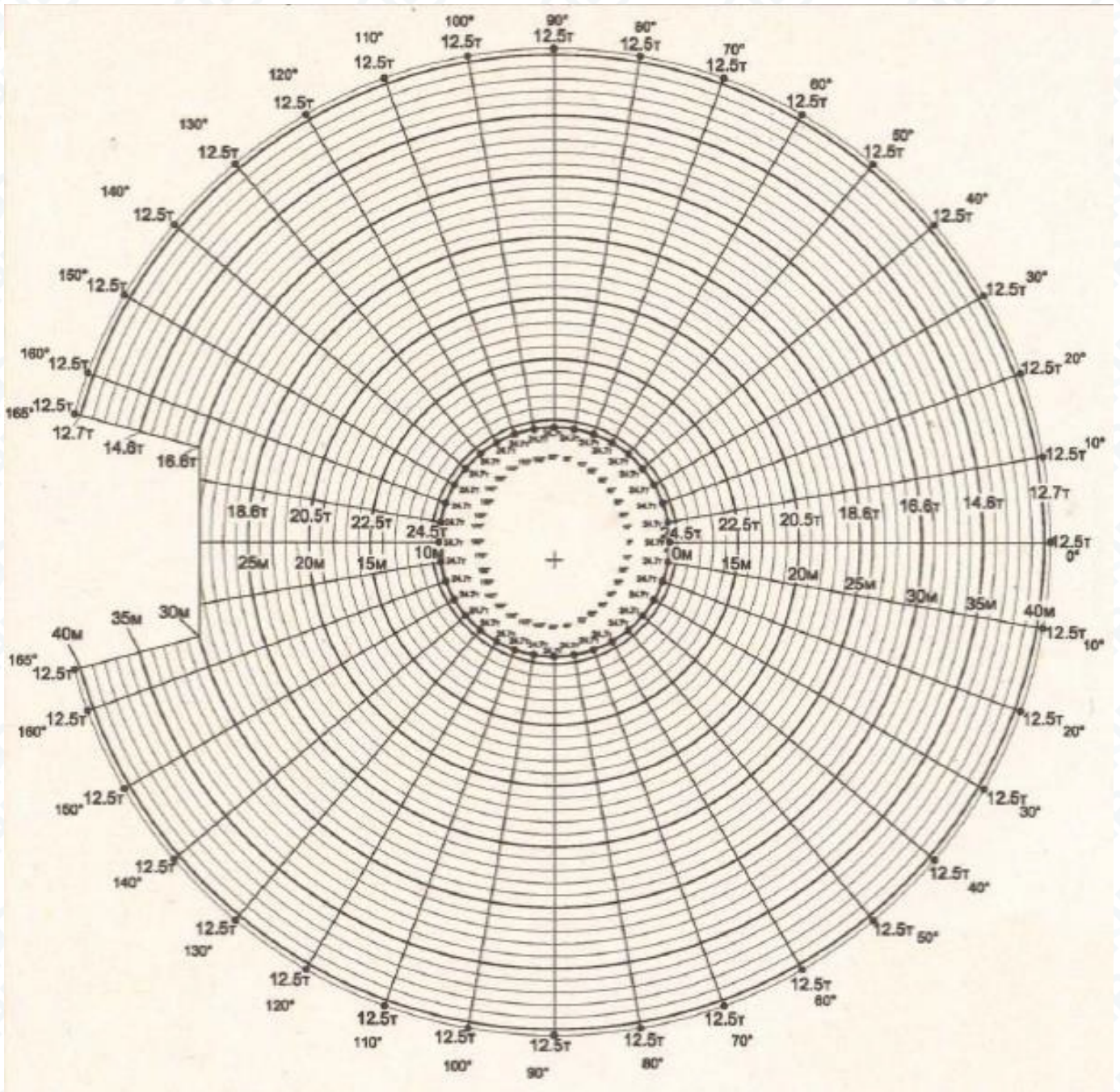
HOISTING DIAGRAM (MAIN BLOCK)



ROYAL MARINE

TETHYS

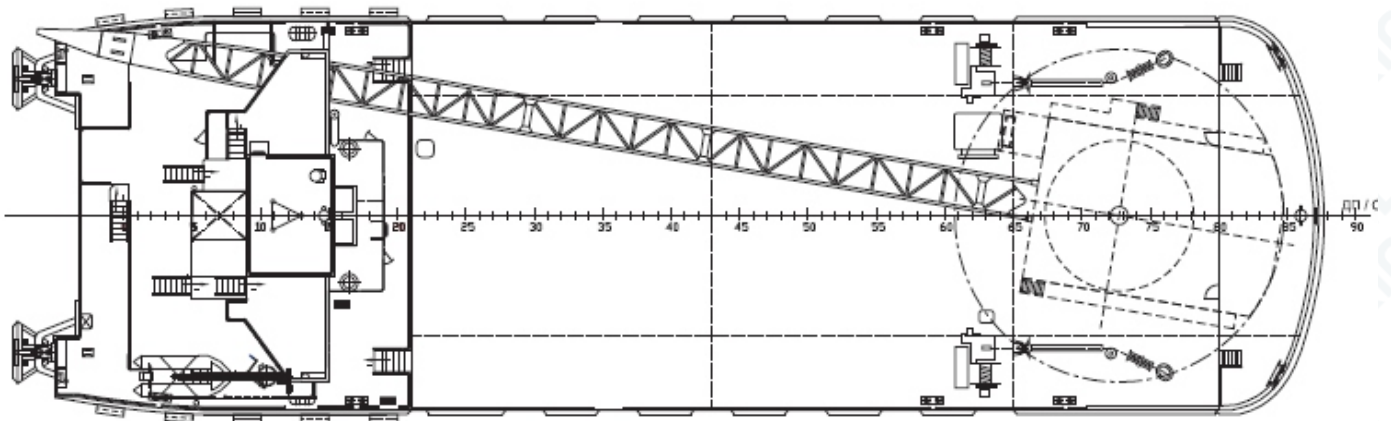
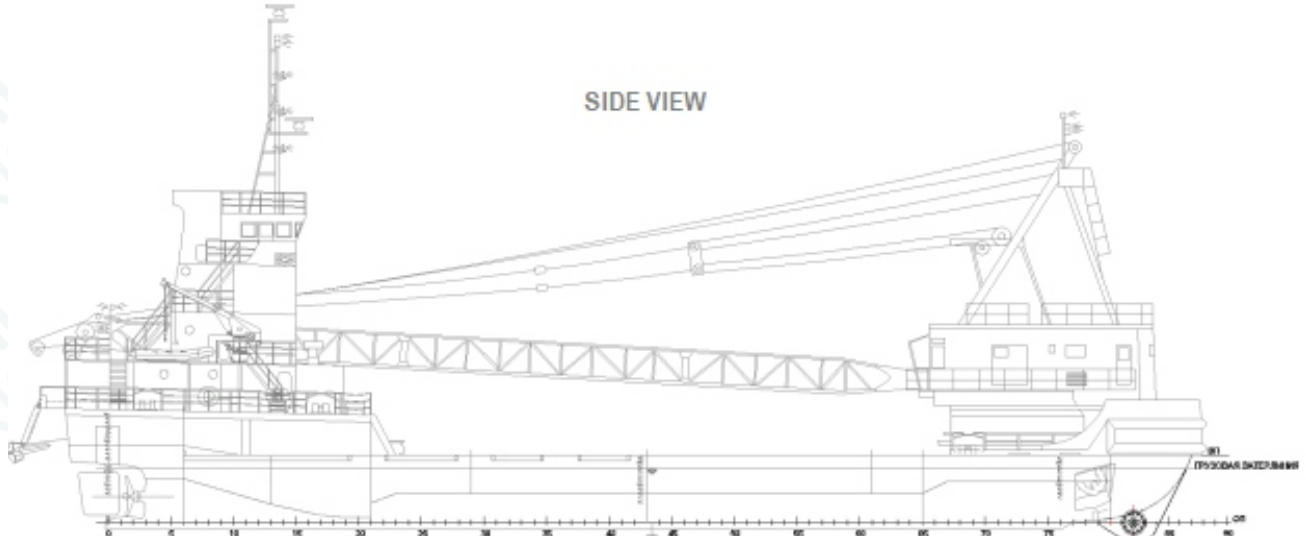
HOISTING DIAGRAM AUXILIARY BLOCK



ROYAL MARINE

TETHYS GENERAL ARRANGEMENT VIEW

SIDE VIEW



Fuel consuming equipment	Fuel consumption at various load. Kg/hour									
	Work load. %									
	10	20	30	40	50	60	70	80	90	100
Main engine YANMAR MF-28UT	9.58	19.6	28.74	38.32	47.9	57.48	67.06	76.64	86.22	95.8
Diesel gen. Nr.1 YANMAR 6KFL	0.97	1.94	2.91	3.88	4.85	5.82	6.79	7.76	8.73	9.7
Diesel gen. Nr.2 YANMAR 3KDL	0.38	0.76	1.14	1.52	1.9	2.28	2.66	3.04	3.42	3.8
Diesel gen. Nr.3 VOLVO PENTA	13.0	20.0	27.6	36.8	46.0	54.4	63.5	72.8	81.9	91.0
Cane engine MITSUBISHI S6AMPTK	1.87	3.74	5.61	7.48	9.35	11.22	13.09	14.96	16.83	18.7
Water heating boiler KITURAMI					1.7					3.4

Consuming equipment	Lube oil consumption at various load. Kg/hour									
	Work load. %									
	10	20	30	40	50	60	70	80	90	100
Main engine YANMAR MF-28UT	0.5	1.0	1.5	2.0	2.5	3.0	3.5	4.0	4.5	5.0
Diesel gen. Nr.1 YANMAR 6KFL	0.3	0.6	0.9	1.2	1.5	1.8	2.1	2.4	2.7	3.0
Diesel gen. Nr.2 YANMAR 3KDL	0.2	0.4	0.6	0.8	1.0	1.2	1.4	1.6	1.8	2.0
Diesel gen. Nr.3 VOLVO PENTA										
Cane engine MITSUBISHI S6AMPTK	0.3	0.6	0.9	1.2	1.5	1.8	2.1	2.4	2.7	3.0

This vessel specification is given in good faith and assumed to be correct but not guaranteed.